




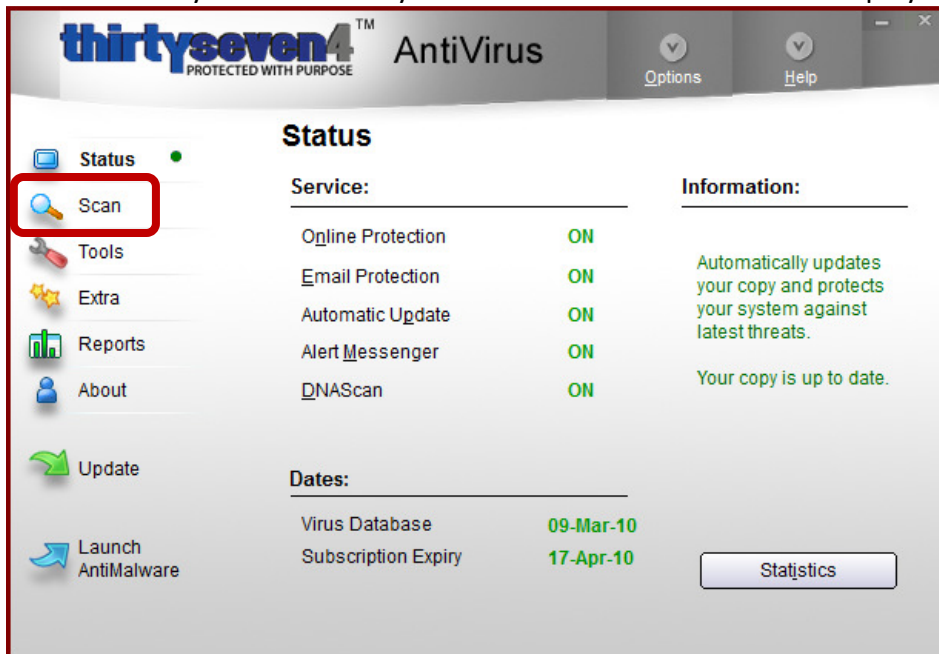
Tim Etzler

District Instructional Technologist
tetzler@kingsvilleisd.com

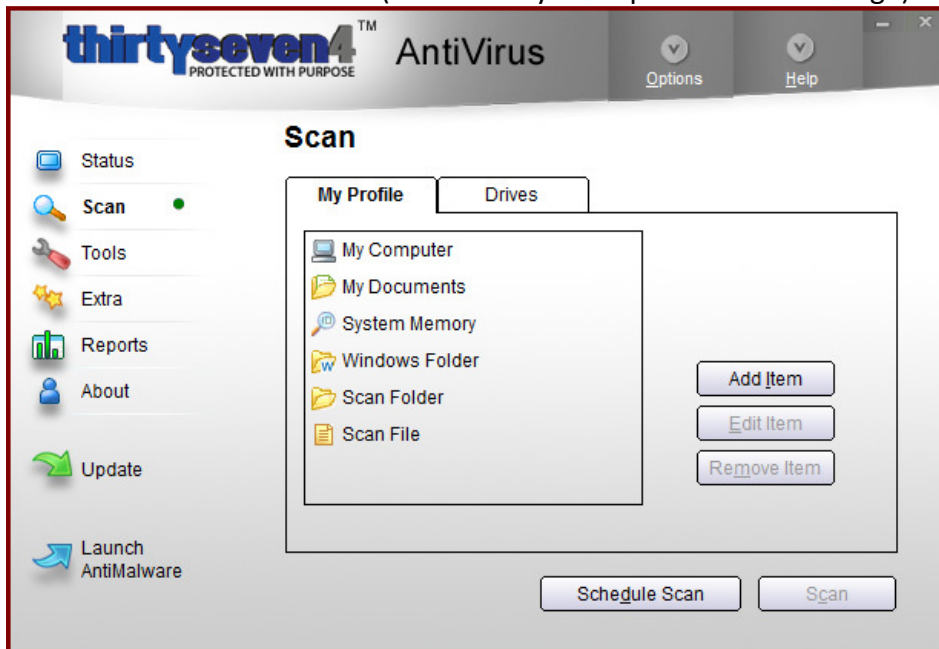
P.O. Box 871 / 207 N. Third
Kingsville, Texas 78363
Office: (361) 592-3387 x8157
Fax: (361) 516-0278

Thirtyseven4 Antivirus - Running Disk Drive Scan

1. After Thrityseven4 has been installed on the computer there will be this icon  located in the system tray
2. Double left-click the mouse on this icon to open the Thirtyseven4 Client Console
3. It automatically runs a Memory Test and in a few moments will display this screen



4. Left-click the mouse on **Scan** (indicated by red square in above image) to display this screen



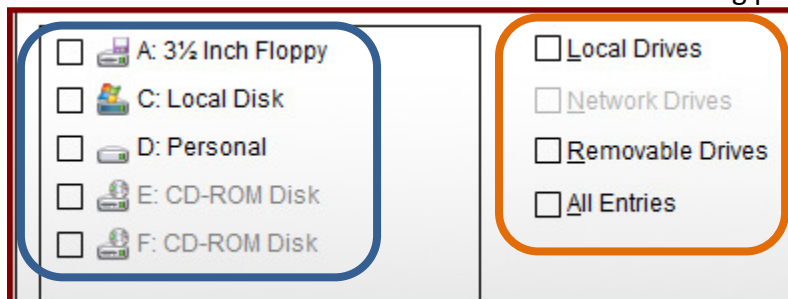
5. You have two different options to select what to scan

a. **My Profile**

- i. Two most common areas to scan is **My Computer** and **My Documents**
- ii. Left-click the mouse on one of the above areas which will activate the **Scan button**
- iii. Left-click the mouse on the **Scan button** to start scanning procedure

b. **Drives**

- i. This option will display all attached storage devices presently connected to the computer
- ii. In the **blue square area** shown below you can individually left-click the mouse in the respective box to manually select which drives to scan
- iii. In the **orange square area** you can left-click the mouse on the box in the respective box to select the following
 - 1) **Local Drives** - all hard drives connected in the physical computer case will be automatically checked in the **blue square area**
 - 2) **Removable Drives** - All removable drives presently connected to the computer will automatically checked in the **blue square area**. This will include jump drives, external hard drives, external CD/DVD drives, internal CD/DVD drives, etc.
 - 3) Selecting any devices in #1 or #2 above will activate the **Scan button**
- iv. Left-click the mouse on the **Scan button** to start scanning procedure



This is a sample of screen that will be displayed during the scanning procedure

